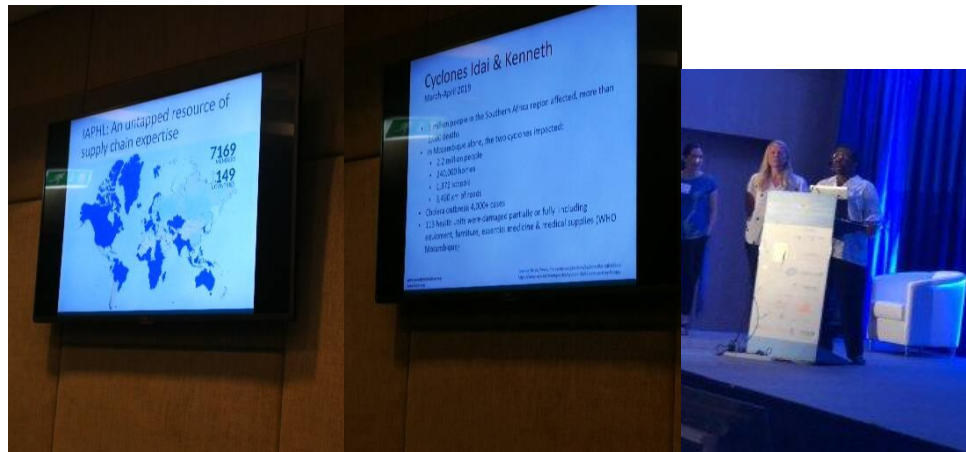


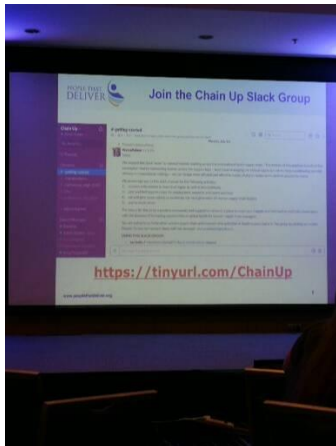
## IAPHL Scholarship Beneficiaries' Report – Nadiya Jiwa

- Purpose:  
To learn about global best practices in supply chain management for health and humanitarian services for responding to conventional as well as emergency situations. Also, to network with likeminded professionals in development of the trade for health and humanitarian logistics and supply chain management.
- Background:  
This conference was hosted by EAC Regional Center of Excellence/ University of Rwanda with the 11<sup>th</sup> Annual Health and Humanitarian Logistics teams from Georgia Tech and other institutions outside Rwanda including IAPHL. Theme of this year was, “Road to Resilience: Sustainably Meeting Health, Humanitarian, and Development Needs”
  - Where I was able to participate as a part of panel of discussions and workshop:
    1. Emergency response of Cyclone Idai and Kenneth: How we would respond; representation of IAPHL on how we could prepare as professionals





2. Workshop of “Chain Up” to discuss all the challenges we face as women in supply chain management and to start discussing our challenges and combatting stigma and underlying ideologies of the patriarchal mindset in our worlds.



- Participation/Photographs



- Contacts made/Networking

S/N	Name of Contact	Organization & Position
1.	Liz Igharo	JSI/IAPHL Executive Director
2.	Dominique Zwinkels	PtD Executive Director
3.	Alexis Strader	PtD Program Officer
4.	Nikita Birkbeck	JSI Washington
5.	Joseph Desire	MoH Rwanda
6.	Francis Oboi	MoH Uganda
7.	Olivier NG. Wane	MCCH/Supply Chain Senior Officer, Rwanda
8.	Witness Hussain	MoH Zimbabwe
9.	Ahamad Flagbata Kallon	MoH Sierra Leone
10.	Lloyd Matowe	PharmAssist Africa
11.	Shahzad Yavari	Nexleaf Analytics
12.	Jenny Froome	
13.	Sanjeev Gadhia	Astral Aviation
14.	Landry Medegan	I+solutions
15.	Harrison Mariki	inSupply Health
16.	Magdalena Lopez	MSF
17.	Joan Anyanwu	JSI/IAPHL

- Lessons learned/Key takeaways

- a. “Unsolicited humanitarian response” is aid which is received in emergency situations by countries (for example in cyclone Idai/Kenneth and in Ebola outbreak). It is important to plan for needs properly to make best use of this resource under the circumstances
- b. Chain Up women’s forum in supply chain is an excellent arena to connect with women from all walks of life. Sometimes we do not realize the vulnerability and sacrifices which women go through for socio-economic independence but particularly in supply chain careers. We need to voice our concerns and address underlying belief systems.
- c. Countries in Africa with sad histories such as Rwanda, Somalia and Liberia have the ability to positively strategize and develop progressively into excellence of healthcare systems
- d. “Traceability” is a modern standardization tool developed for donors within countries to collectively be able to track their products in country by using barcodes
- e. Electronic proof of delivery has been tried as a cost-effective method for noting delivery
- f. I+solution has developed a software for health products which can “talk” to 2 or more other software and support in reduced efforts for data entry and extraction

- g. Integrating food and nutrition products to the national medicines supply system is do-able (as shown by Namibia)
  - h. Private sector is open to partnering and investing in public sector supply chain systems
  - i. Integrating local transport systems is a cost-effective strategy to use local resources in delivering international results
  - j. Scholarships (limited) are available for short courses as well as masters level trainings in health and humanitarian supply chain management for professionals from low income countries
- Next Steps
    - To keep in touch with professionals met during the conference for further growth together
    - To voice and discuss supply chain strategies on IAPHL (Tanzanian chapter) as well as Chain Up forum so that we can collectively grow together
    - To try for scholarships to pursue distance learning Masters program
    - To continue participating in such forums for health and humanitarian supply chain management
    - To keep referring to resources of presentations from HHL website:  
<https://chhs.gatech.edu/conference/2019/program/panels>